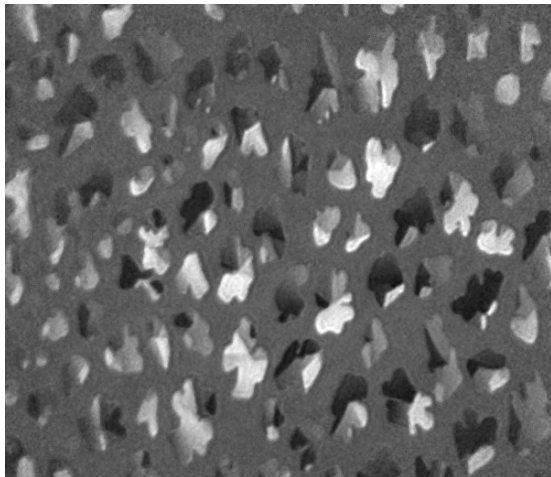
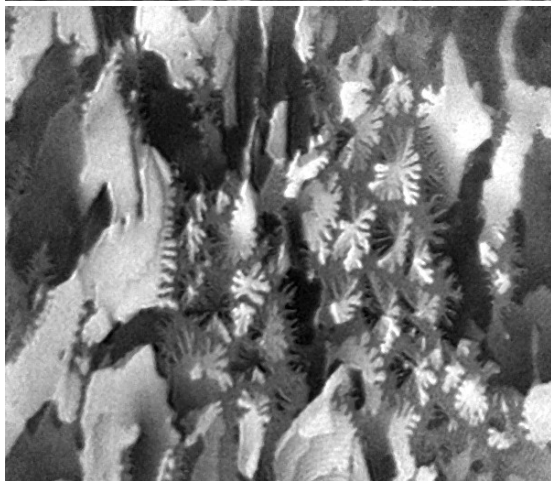
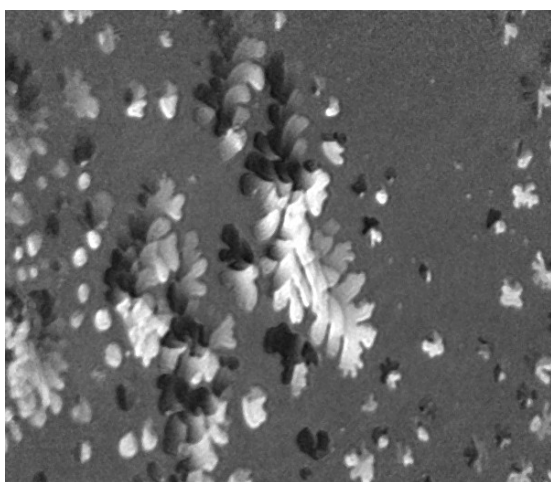


NANOFILM_ULTRABAM

**Pictures taken with the new generation of Brewster Angle Microscopes
generating fully focused images in real-time !**

Monolayer of DMPE during first-order phase transition,
contrast in domains caused by long range orientation order.



Ethyl stearate monolayer at $\pi < 1 \text{ mN/m}$.
Field of view ca. $600 \mu\text{m}$.

